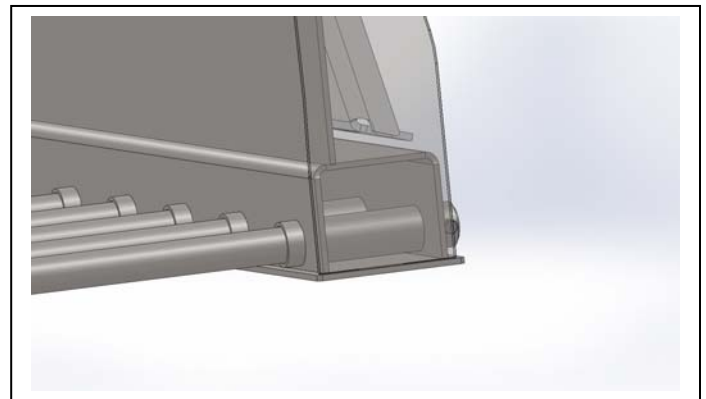
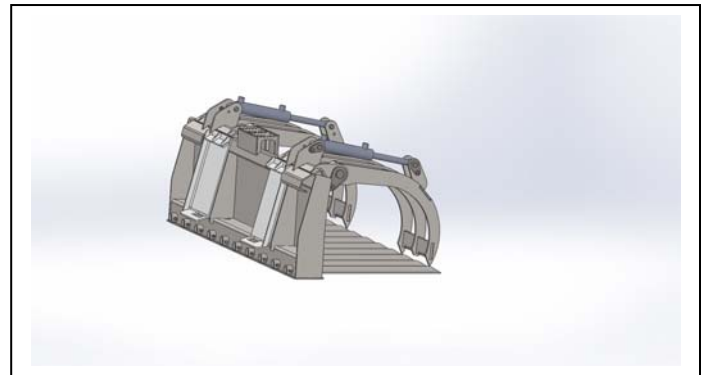
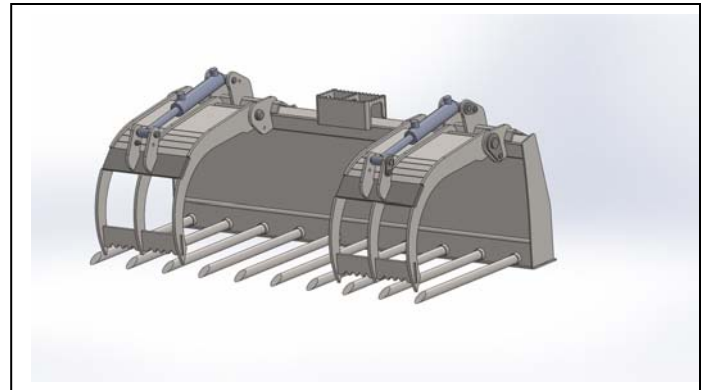
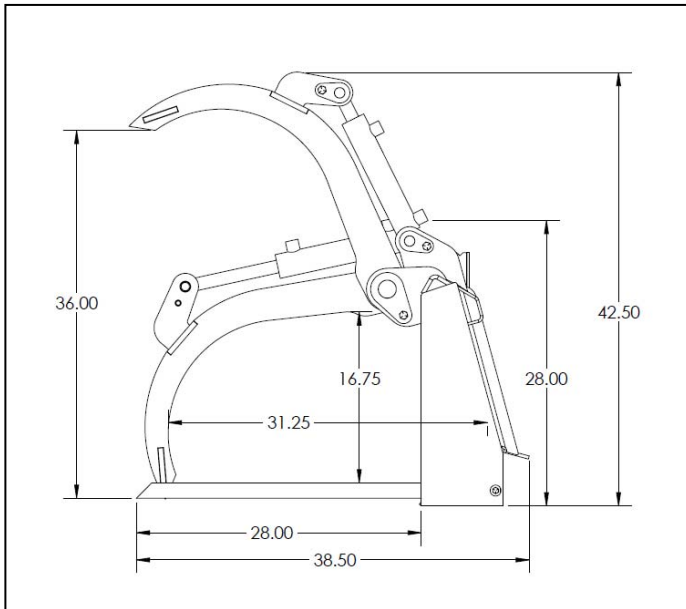




1128 B Cormorant Ave, Detroit Lakes, MN 56501
 701-360-3544 - 855-777-3539
 M2attachments@gmail.com

Standard Manure Grapple

72" Model # 102346



Specifications	
Width	72"
Overall Height - Closed	28"
Overall Height - Open	42½"
Overall Depth	38½"
Grapple Opening	36"
Depth of Bucket	31¼"
Replaceable Tines	1-1/2" 1144 Steel
Space Between Tines	5¾"
Main Body	1/4" A36 HRP& O
Grapple Arms	3/8" Grade 50
Cylinders	2" x 8" – Welded Cross Tube
Hydraulic Couplers	Optional
Hydraulic Hoses	3/8"
PSI Max	3,000 PSI
Weight	72" = 809 Lb.

Features:

- Durable construction for years of use
- Excellent for many different materials including manure, brush, hay, straw and light demolition
- Replaceable tines constructed of 1½ 1144 stress relieved steel, Ultimate Tensile Strength of 115,000 psi
- Painted using a 2 part Urethane process for exceptional results
- Independent grapples with greaseable main pin